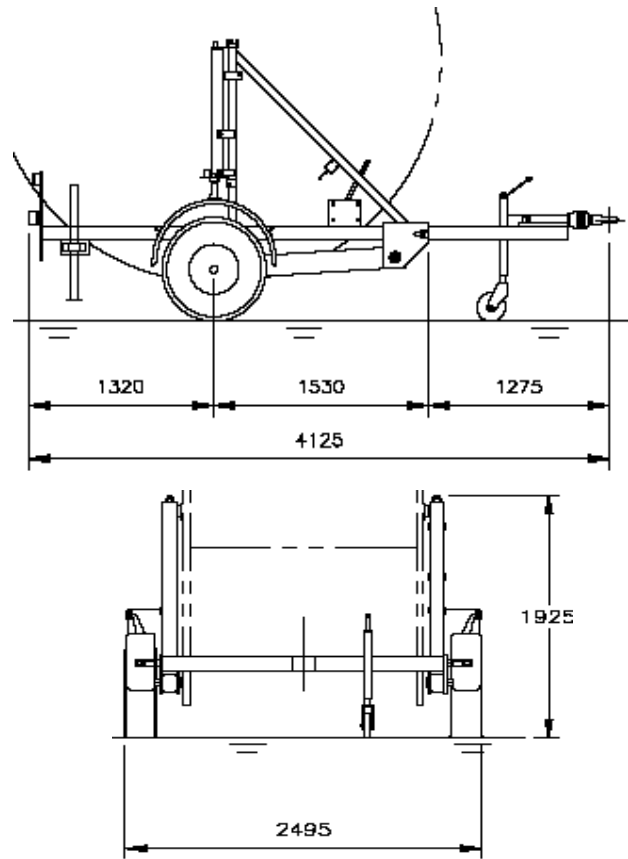


PT60 CABLE DRUM TRAILER – 2300KG UK HIGHWAY

Specification

| | |
|-----------------|--|
| Unladen Weight: | 800kgs. |
| Gross Weight: | 3100kgs. |
| Nose Load: | 100kgs. |
| Axle Load: | 3000kgs. |
| Payload: | 2300kgs. |
| O/all Width: | 2495mm. |
| Max reel dia: | 3200mm. |
| Min reel dia: | 1420mm. |
| Max reel width: | 1710mm. (with collars) |
| Spindle Dia: | 76mm. |
| Tyres & Wheels: | 215 x 75R – 17.5 |
| Drawbar: | Fixed height (standard height 680mm) 50mm Eye. |
| Brakes: | 300 x 60 Auto reverse |
| Lights: | To EEC directives. |
| Construction: | All steel welded |
| Drum lift: | Hand pump operation c/w flow balance valve, locked mechanically in raised position. |
| Paint: | Full gloss. |



The trailer has been designed primarily for the purpose of transporting and unreeling of cable drum upto 2300kg on the highway.

The trailer rides on two pneumatic road wheels with heavy duty hollow rubber suspension units. The position of the axle stubs is such that a nose weight is always present though the towing eye in both the laden and unladen conditions.

Loading of the cable drum is achieved by locating the drum and spindle tube into the relevant lifting cups, pumping the hydraulic frame up, inserting the two locking pins and then release the hydraulic pressure